

# DECIDE ON BLAIR COUNTY

PENNSYLVANIA



**RAIL SERVED BY  
NORFOLK SOUTHERN**



**THE HEART OF THE  
I-99 INNOVATION CORRIDOR**

## WHY BLAIR COUNTY:

- Over 500 Acres of Available Rail Served Sites
- Over 1 Million sq/ft of Available Rail Served Buildings
- Centrally Located for Easy Access to Northeast Business Centers
- KOZ Designated Sites & Enterprise Zones
- Available Regional Workforce
- Inland Port Facilities Potential



**ALTOONA ▲ BLAIR COUNTY  
DEVELOPMENT CORPORATION**  
BUILDING FOR A BETTER TOMORROW  
WWW.ABCDCORP.ORG ▲ 814.944.6113



## DeGol Center for Advanced Manufacturing



Location: Hollidaysburg, PA  
Municipality: Frankstown Township  
Proximity to I-99: 2 Miles  
Size of Building: 750,000 sq. ft.  
Available Space: 300,000 sq. ft.  
Rail Operator: Norfolk Southern & D-Watt Rail  
Existing Siding: Yes

## Hoss's Fresh Express



Location: Claysburg, PA  
Municipality: Greenfield Township  
Proximity to I-99: 2 Miles  
Size of Building: 79,300 sq. ft.  
Available Space: 79,300 sq. ft.  
Rail Operator: Everett Rail  
Existing Siding: Yes

## Butterick



Location: Altoona, PA  
Municipality: City of Altoona  
Proximity to I-99: 2 Miles  
Size of Building: 195,326 sq. ft.  
Available Space: 195,326 sq. ft.  
Rail Operator: Norfolk Southern  
Existing Siding: Yes

## Smith Transport



Location: Tyrone, PA  
Municipality: Snyder Township  
Proximity to I-99: 1 Miles  
Size of Building: 450,000 sq. ft.  
Available Space: 450,000 sq. ft.  
Rail Operator: Norfolk Southern  
Existing Siding: Yes

## McCabe Warehouse



Location: Claysburg, PA  
Municipality: Greenfield Township  
Proximity to I-99: 3 Miles  
Size of Building: 300,000 sq. ft.  
Available Space: 300,000 sq. ft.  
Rail Operator: Everett Rail  
Existing Siding: Yes

# BUILDINGS

# DECIDE ON BLAIR COUNTY

PENNSYLVANIA



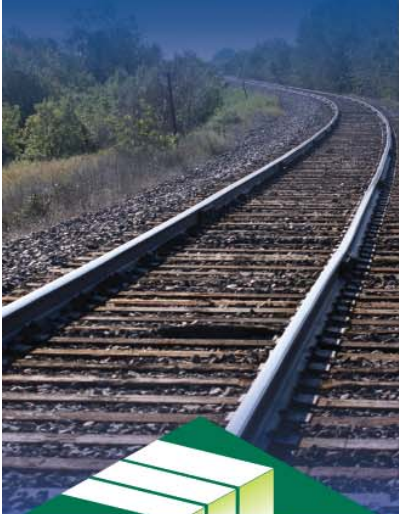
RAIL SERVED BY  
NORFOLK SOUTHERN



THE HEART OF THE  
I-99 INNOVATION CORRIDOR

## WHY BLAIR COUNTY:

- Over 500 Acres of Available Rail Served Sites
- Over 1 Million sq/ft of Available Rail Served Buildings
- Centrally Located for Easy Access to Northeast Business Centers
- KOZ Designated Sites & Enterprise Zones
- Available Regional Workforce
- Inland Port Facilities Potential



ALTOONA ▲ BLAIR COUNTY  
DEVELOPMENT CORPORATION

BUILDING FOR A BETTER TOMORROW

WWW.ABCDCORP.ORG ▲ 814.944.6113



## DeGol Business Park



Location: Hollidaysburg, PA  
Municipality: Frankstown Township  
Proximity to I-99: 2 Miles  
Acreage: 360 acres  
Acreage Available: 180 developable  
Rail Operator: Norfolk Southern & D-Watt Rail

## Classification Yards



Location: Altoona, PA  
Municipality: Logan Township  
Proximity to I-99: 2 Miles  
Acreage: 150 Acres  
Acreage Available: 150 Acres  
Rail Operator: Norfolk Southern

## South Altoona Business Park



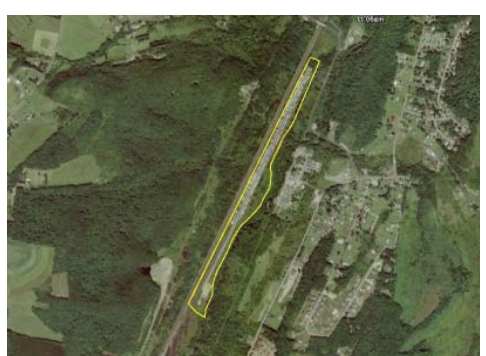
Location: Altoona, PA  
Municipality: City of Altoona  
Proximity to I-99: 2 Miles  
Acreage: 2 acres  
Acreage Available: 2 acres  
Rail Operator: Norfolk Southern

## Jubelirer Business Park



Location: Tyrone, PA  
Municipality: Snyder Township  
Proximity to I-99: 1 Miles  
Acreage: 25 Acres  
Acreage Available: 25 Acres  
Rail Operator: Norfolk Southern

## Powell Site



Location: Altoona, PA  
Municipality: Logan Township  
Proximity to I-99: 3 Miles  
Acreage: 100 Acres  
Acreage Available: 100 Acres  
Rail Operator: Norfolk Southern

# SITES